

DOSKO

M2961090A

MODEL NUMBER: 2961090

SERIAL NUMBER: _____

Owner's Manual

Instructions for Operation, Maintenance

Compact Stump and Root Grinder

2961090 (200-6H)

Your Dosko grinder is intended for outdoor-use only and can be used to remove many tree stumps and exposed root systems close to ground level. By moving the blade in sweeping movements laterally over the top and front of the stump, you can gradually grind it away. Make sure you completely read and understand this manual before using the grinder for the first time.

WARNING

READ and UNDERSTAND this manual completely before using the grinder! Failure to properly operate, and maintain this grinder could result in *serious injury or death* to the operator or bystanders. All machines have hazards associated with their operation. This stump grinder has certain special hazards, which you must be aware of. As an operator or owner you have a duty to be aware of these hazards and know preventive measures to take to avoid them. When reading this manual pay particular attention to avoiding these hazards.

In particular, be aware of the following:

- **Know location of buried electrical and other utility lines.**
- **Do not allow children or untrained adults to operate.**
- **Wear eye protection and other personal protection against flying rocks and debris.**
- **Check that cutter wheel teeth are secured, sharp and not missing.**
- **Do not operate if operator presence bar fails to stop engine upon release.**
- **Make sure no children or bystanders are within 75 feet of stump grinding operation.**
- **Protect cars, windows and other objects within 75 feet from flying debris.**
- **Be prepared for machine "kickback" when initially contacting the stump.**
- **Be aware of potential for carbon monoxide (CO) poisoning.**
- **Prevent fires/explosions from fueling.**
- **Do not attempt to perform adjustments, declog or clean unit while engine is running.**
- **Avoid burns from engine or hot exhaust.**
- **Avoid using in wet or icy conditions where falls may occur.**

Details about these hazards are found throughout the manual and are summarized at the end of the manual under "Important Safety Information."

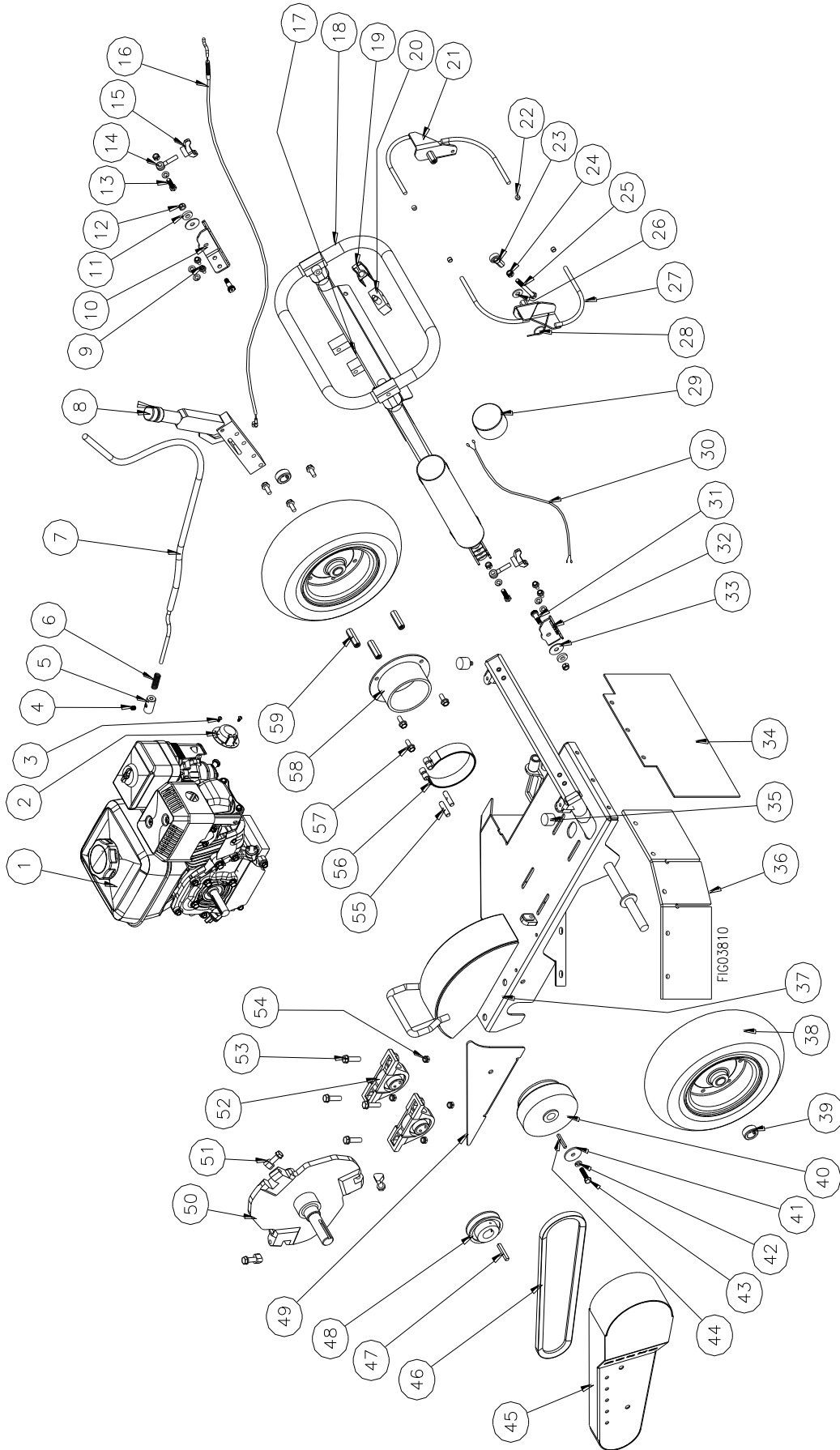
STOP!

ADD ENGINE OIL: Your stump grinder comes fully assembled and requires only that you add engine oil to crankcase and fuel to tank.

INSPECT COMPONENTS: Closely inspect to make sure no components are missing or damaged. See the "Receiving Your Unit" section for instructions on whom to contact to report missing or damaged parts.

Any Questions, Comments, Problems, or Parts Orders
Call your dealer or Dosko Customer Service 1-800-822-0295

M2961090 Exploded View – Rev A



M2961090 Parts List – Rev A

Item	Part #	Description	Qty	Item	Part #	Description	Qty	
1	606512	Honda GX200 engine	1	34	786081	Rear rubber flap	1	
2	785906	Exhaust deflector	1	35	786488	Rubber bumper	2	
3	785907	Screw, exhaust deflector	2	36	786080	Front rubber flap	1	
4	82319	5/16"-18 set screw	1	37	785850	Frame	1	
5	783570	Wire lock collar	1	38	786214	Tire	2	
6	783569	Spring, brake band	1	39	305200	3/4" dia. wheel retainer	2	
7	786082	Brake cable	1	40	786079	Clutch	1	
8	783547	Brake lever	1	41	785889	Retaining washer, clutch	1	
9	82014	5/16"-18 x 1/2" HHSF bolt	4	42	82100	5/16" split lock washer	7	
10	786472	Hinge bracket (right)	1	43	82412	5/16"-24 x 1-1/4" HHCS	1	
11	786380	Pivot spacer	2	44	82141	3/16" x 1-1/2" key	1	
12	82020	5/16"-18 nyloc nut	4	45	786038	Belt guard	1	
13	82226	5/16"-18 x 1-1/4" HHCS bolt	2	46	785914	AX37 belt	1	
14	82440	5/16"-18 x 1-5/8" eyebolt	2	47	82143	1/4" x 1-3/4" key	1	
15	38578	T-handle knob	2	48	785913	AK30 x 1" sheave	1	
16	786083	Throttle cable	1	49	786037	Bracket mounting, belt guard	1	
17	786103	Dosko decal	1	50	786213	Cutting wheel	1	
18	785867	Handle	1	51	786403	Tooth set	Black, standard	1
19	783769	Microswitch bracket	1		786462		Red, sand & clay	opt.
20	783545	Microswitch	1		786461		Gold, rock	opt.
21	785880	Throttle lever	1	52	785400	1" pillow block	2	
22	785534	1/4" x 5/16" vinyl cap	4	53	82391	7/16"-14 x 1-1/2" flange bolt	4	
23	782399	Ball joint	1	54	82115	7/16"-14 nyloc nut	4	
24	82312	5/16"-24 hex nut	1	55	783568	Floating pin, brake band	2	
25	82407	5/16"-24 x 3-1/4" HHCS bolt	1	56	783567	4" brake band	1	
26	82021	5/16" USS flat washer	1	57	82015	5/16"-18 x 3/4" HHSF bolt	6	
27	785883	Operator presence handle	1	58	786067	Hub	1	
28	783924	Spring	1	59	82408	5/16"-18 x 1-1/34" coupling nut	3	
29	783815	1-3/4" vinyl cap	1	Personal Protection Equipment (not shown):				
30	783283	Wire harness	1	n/a	174630	Reusable corded earplugs	1	
31	82434	3/8" x 1/2" shoulder bolt	2		174653	Face shield	1	
32	786473	Hinge bracket (left)	1		174690	Safety eyewear	1	
33	82435	3/8" x 1-1/4" PTFE washer	2		8467	Safety gloves	1	