



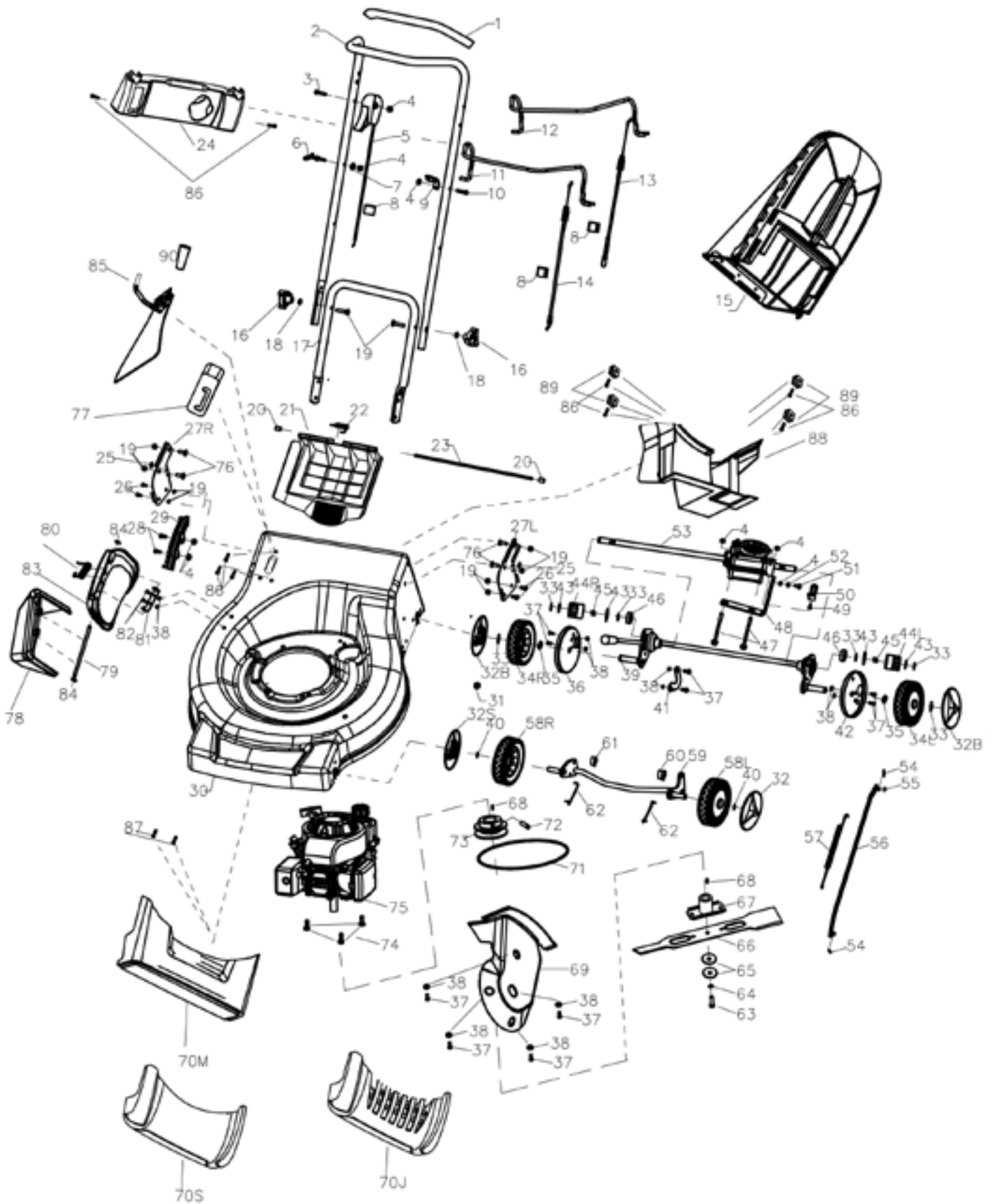
Machinery | Spares | Consumables
(Specialist suppliers to Tool Hire & Garden Machinery Dealers)

GP213N1SPM

Parts List



www.hscmsc.co.uk



Item No.	Part No.	Description
01	GP213IN1SPM/01	Pvc Pipe
02	GP213IN1SPM/02	Upper Handle
03	GP213IN1SPM/03	Bolt M6*45
04	GP213IN1SPM/04	Nylon Self-Lock Nut M6
05	GP213IN1SPM/05	Throttle Cable Assy.
06	GP213IN1SPM/06	Rope Guide
07	GP213IN1SPM/07	Flat Washer
08	GP213IN1SPM/08	Cli-Cable Single
09	GP213IN1SPM/09	Support Of Clutch Cable
10	GP213IN1SPM/10	Bolt M6*30
11	GP213IN1SPM/11	Brake Lever
12	GP213IN1SPM/12	Clutch Lever
13	GP213IN1SPM/13	Clutch Cable Assy.
14	GP213IN1SPM/14	Brake Cable Assy.
15	GP213IN1SPM/15	Compound Bag Assy.
16	GP213IN1SPM/16	Tri-Angle Fastener
17	GP213IN1SPM/17	Lower Handle
18	GP213IN1SPM/18	Washer
19	GP213IN1SPM/19	Bolt
20	GP213IN1SPM/20	Transparent Sleeve
21	GP213IN1SPM/21	Rear Flap
22	GP213IN1SPM/22	Spring Of Rear Flap
23	GP213IN1SPM/23	Axle Of Rear Flap
24	GP213IN1SPM/24	Decoration Panel Of Handles
25	GP213IN1SPM/25	Lock Circle
26	GP213IN1SPM/26	Bolt M8*25
27L	GP213IN1SPM/27L	Left Plate
27R	GP213IN1SPM/27R	Right Plate
28	GP213IN1SPM/28	Bolt M6*12
29	GP213IN1SPM/29	Height Adjuster
30	GP213IN1SPM/30	Deck
31	GP213IN1SPM/31	Jacket Of Clutch Cable

Item No.	Part No.	Description
32S	GP213IN1SPM/32S	Wheel Cover Of 8"Wheel
32B	GP213IN1SPM/32B	Wheel Cover Of 9.5"Wheel
33	GP213IN1SPM/33	Lock Circle
34L	GP213IN1SPM/34L	9.5"Left S/P Wheel Assy.
34R	GP213IN1SPM/34R	9.5"Right S/P Wheel Assy.
35	GP213IN1SPM/35	Wshaer
36	GP213IN1SPM/36	Right Shield
37	GP213IN1SPM/37	Bolt M5*12
38	GP213IN1SPM/38	Nut M5
39	GP213IN1SPM/39	Rear Axle Assy.
40	GP213IN1SPM/40	Lock Circle Of Wheel Axle
41	GP213IN1SPM/41	Plate Of Rear Axle
42	GP213IN1SPM/42	Left Shield
43	GP213IN1SPM/43	Bigger Washer
44L	GP213IN1SPM/44L	Left Gear S/P
44R	GP213IN1SPM/44R	Right Gear S/P
45	GP213IN1SPM/45	Key
46	GP213IN1SPM/46	Bearings 6001Zz
47	GP213IN1SPM/47	Bolt M6*75
48	GP213IN1SPM/48	Stand Of Gear Box
49	GP213IN1SPM/49	Self-Tap Bolt St4.8*12
50	GP213IN1SPM/50	Stand Of Clutch Cable
51	GP213IN1SPM/51	Bolt M6*16
52	GP213IN1SPM/52	Washer 6
53	GP213IN1SPM/53	Gear Box
54	GP213IN1SPM/54	Clip Of Connecting Link
55	GP213IN1SPM/55	Washer 8
56	GP213IN1SPM/56	Connecting Link
57	GP213IN1SPM/57	Spring Of Connecting Link
58L	GP213IN1SPM/58L	8"Left Front Wheel
58R	GP213IN1SPM/58R	8"Right Frong Wheel
59	GP213IN1SPM/59	Front Wheel Axle
60	GP213IN1SPM/60	Thicker Lining

Item No.	Part No.	Description
61	GP213IN1SPM/61	Thin Lining
62	GP213IN1SPM/62	U-Type Spring
63	GP213IN1SPM/63	Main Bolt Of Crankshaft
64	GP213IN1SPM/64	Flat Washer 10
65	GP213IN1SPM/65	Washer
66	GP213IN1SPM/66	21" Straight Blade
67	GP213IN1SPM/67	Adaptor
68	GP213IN1SPM/68	Woodruff Key
69	GP213IN1SPM/69	Belt Cover
70S	GP213IN1SPM/70S	Front Decorational Panel-70S
70J	GP213IN1SPM/70J	Front Decorational Panel-70J
70M	GP213IN1SPM/70M	Front Decorational Panel-70M
71	GP213IN1SPM/71	Belt
72	GP213IN1SPM/72	Bolt M6*15
73	GP213IN1SPM/73	Pulley
74	GP213IN1SPM/74	Engine Bolt
75	GP213IN1SPM/75	Engine
76	GP213IN1SPM/76	Bolt
77	GP213IN1SPM/77	Plastic Stand
78	GP213IN1SPM/78	Side Discharge Guider
79	GP213IN1SPM/79	Axle
80	GP213IN1SPM/80	Spring
81	GP213IN1SPM/81	Stand
82	GP213IN1SPM/82	Bolt M5*15
83	GP213IN1SPM/83	Side Discharge Flap
84	GP213IN1SPM/84	Lock Circle
85	GP213IN1SPM/85	Controller Of R/S Discharge
86	GP213IN1SPM/86	Bolt St3.8*15
87	GP213IN1SPM/87	Bolt St4.8*12
88	GP213IN1SPM/88	Cover Of Gear Box
89	GP213IN1SPM/89	Locking Plate
90	GP213IN1SPM/90	Plastic Cap Of Handle