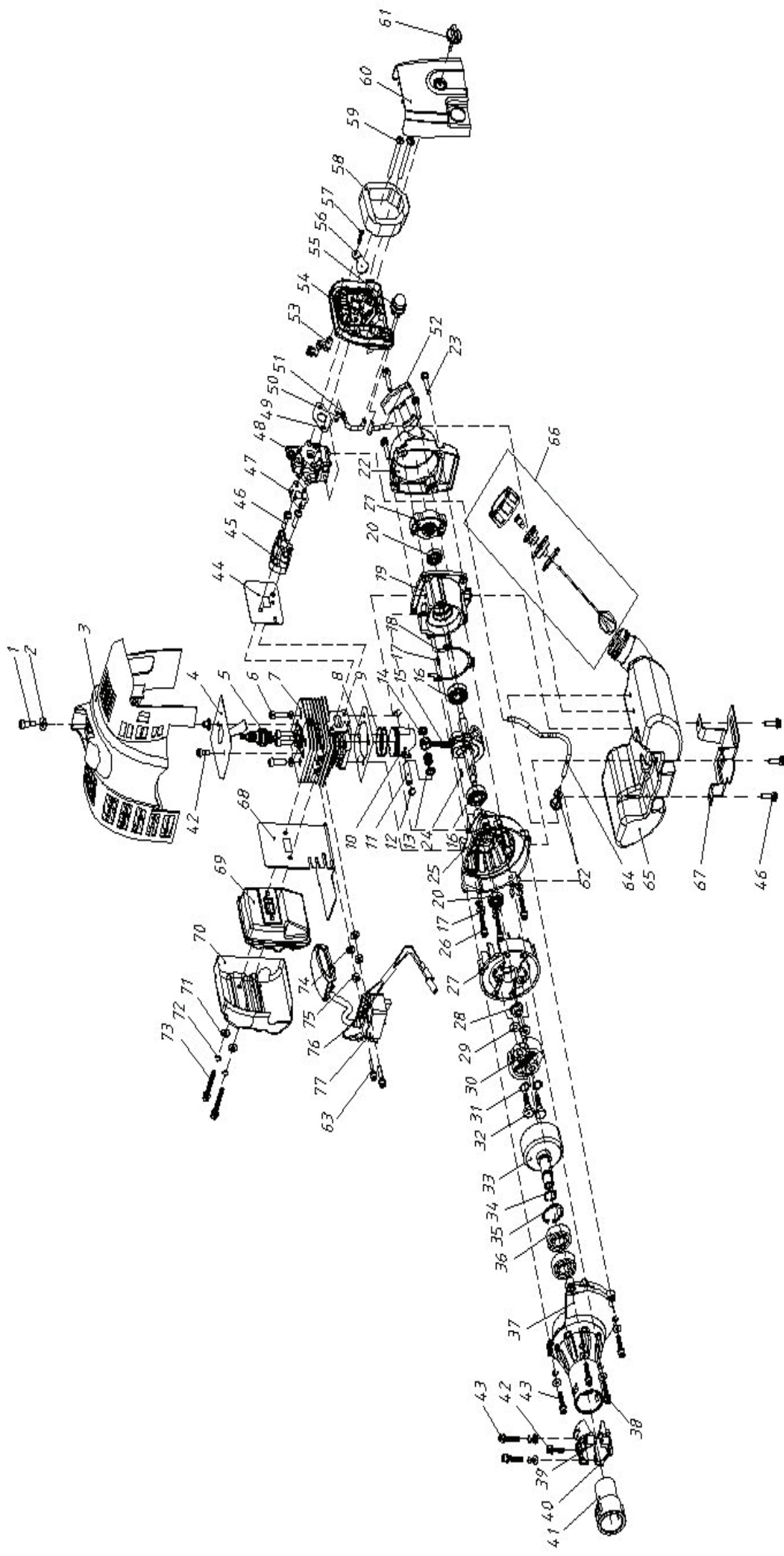




Machinery | Spares | Consumables
(Specialist suppliers to Tool Hire & Garden Machinery Dealers)

GP263N1C Parts List

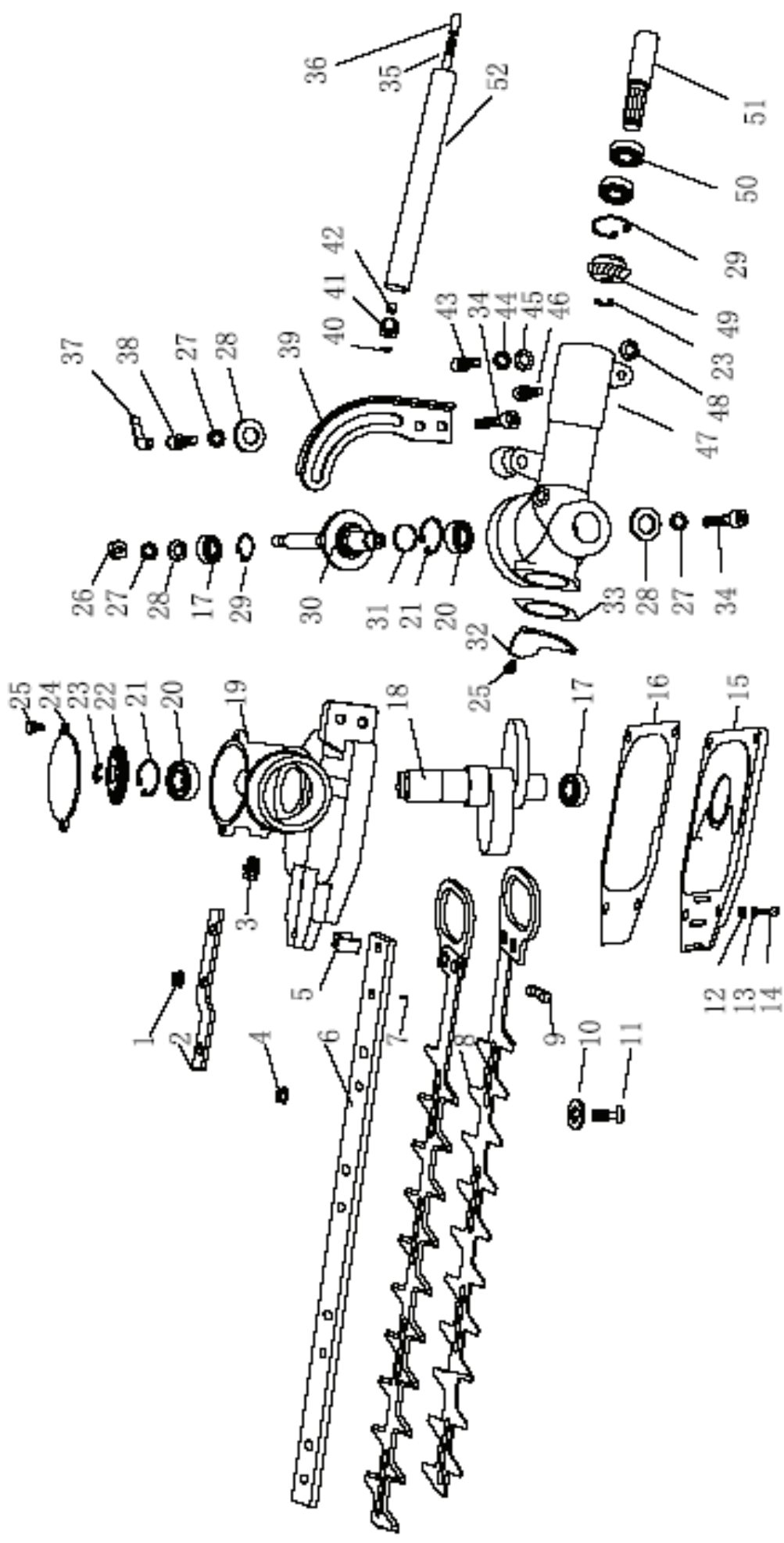




Item No.	Part No.	Description
1	GP03020010013	Bolt assy M5X20
2	GP03040050021	Washer 5
3	GP70030030003	Housing
4	GP02020160187	Baffle of cylinder top
5	GP03130010013	Spark plug RCJ6Y
6	GP03010010061	Bolt M5X20
7	GP70070130001	Cylinder
8	GP02070010020	Gasket,cylinder
9	GP02020020003	Ring,piston
10	GP02010020006	Piston
11	GP02020010004	Pin,piston 8X28
12	GP02020030017	Ring, snap
13	GP03090020018	Needle bearing
14	GP02020150007	Washer,thrust
15	GP02020120009	Crank shaft assy
16	GP03090010028	Bearing 6001/P53
17	GP03060010002	PIN B3X10
18	GP02070010110	Gasket,crankcase
19	GP70070050002	Rear crankcase
20	GP03100010009	Oil seal 12X22X7
21	GP02050100005	Starter pulley comp
22	GP02050070002	Starter comp
23	GP03020020026	Bolt assy M5X16
24	GP03070010001	Woodruff key
25	GP70070050001	Front crankcase
26	GP03010010045	Bolt M5X30

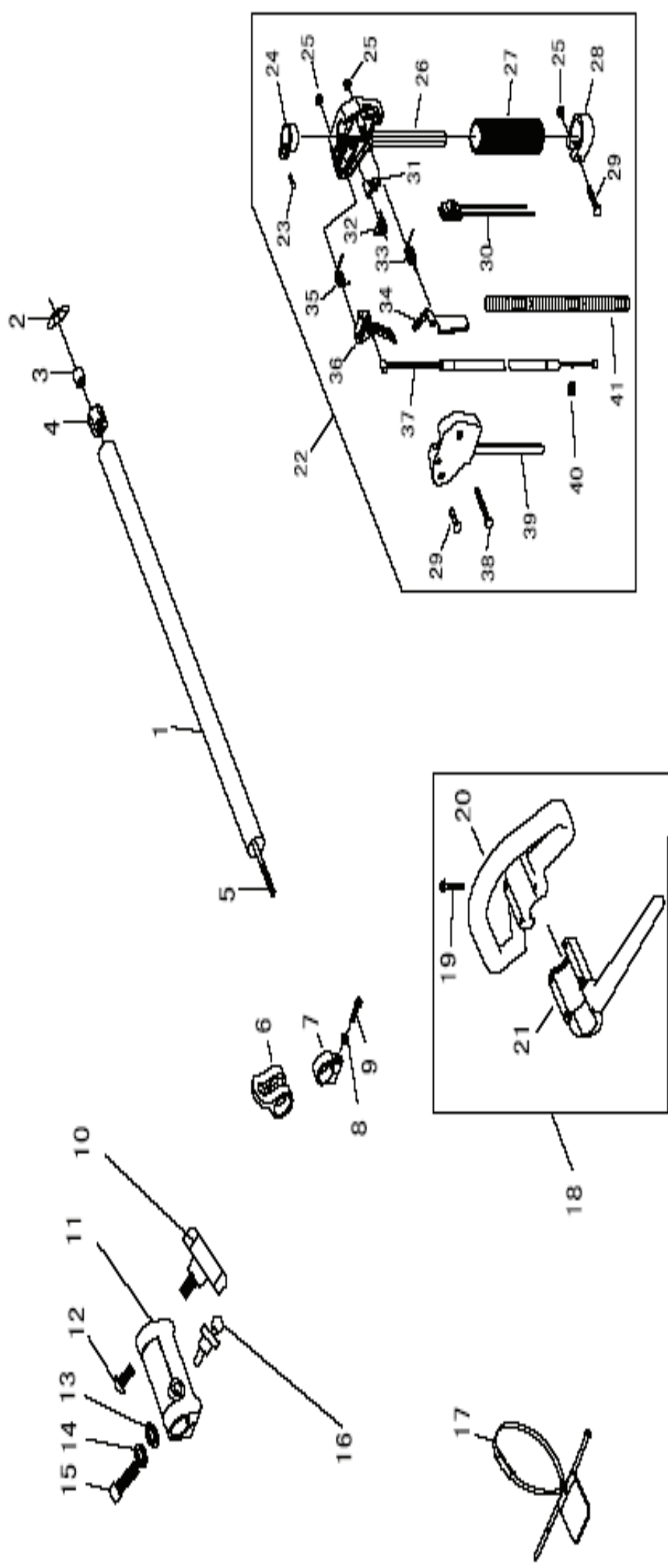
Item No.	Part No.	Description
27	GP02050030018	Rotor
28	GP03030020002	Nut M8X1
29	GP03040050052	Washer
30	GP02050160002	Clutch assy
31	GP03040050042	Wave washer
32	GP02020130001	Clutch bolt
33	GP02020050019	Clutch drum assy
34	GP03120010005	Retaining ring 15
35	GP03120020004	Retaining ring 35
36	GP03090010012	Bearing 6202-2RS/P5
37	GP80010030004	Clutch case
38	GP03010010021	Bolt M5X20
39	GP80010050049	Top holder
40	GP80010050068	Below holder
41	GP02080020069	Rubber,anti-vibration
42	GP03020020025	Bolt assy M5X12
43	GP03010010010	Bolt M5X25
44	GP02070010078	Gasket,insulator
45	GP02110030031	Insulator
46	GP03020020012	Bolt assy M5X20
47	GP02070010061	Gasket,carburetor
48	GP02050020050	Carburetor comp
49	GP02070010099	Gasket,carburetor
50	GP01040010011	Pipe
51	GP02020040036	Clip , pipe
52	GP01040010011	Pipe
53	GP70030040030	Choke Handle
54	GP70030040057	Base, cleaner

Item No.	Part No.	Description
55	GP02050020127	Primer pump ass'y
56	GP70030040028	Choke
57	GP03010040022	Bolt ST3×12
58	GP02090010030	Air filter element
59	GP03020020030	Bolt assy M5X60
60	GP70030040062	Cover, cleaner
61	GP70030070026	Knob,cover
62	GP02050120002	Fuel filter comp
63	GP03020020013	Bolt assy M4X20
64	GP01040010011	Pipe
65	GP70050030001	Fule tank
66	GP02110020026	Cap,fule tank
		Valve,fuel cap
		Holder,valve
		Holder,stopper
		Gasket,fuel cap
		Stopper
67	GP02020160443	Bracket,fuel tank
68	GP02070010133	Gasket,muffler
69	GP02050010063	Muffler assy
70	GP02050010001	Heat shield
71	GP03040020019	Washer 5
72	GP03050010014	Washer 5
73	GP03010010049	Bolt M5X50
74	GP03040010007	Washer 4
75	GP02070010048	Space,ig coil
76	GP02050050137	Wire, lead
77	GP02050030002	Ignition coil comp



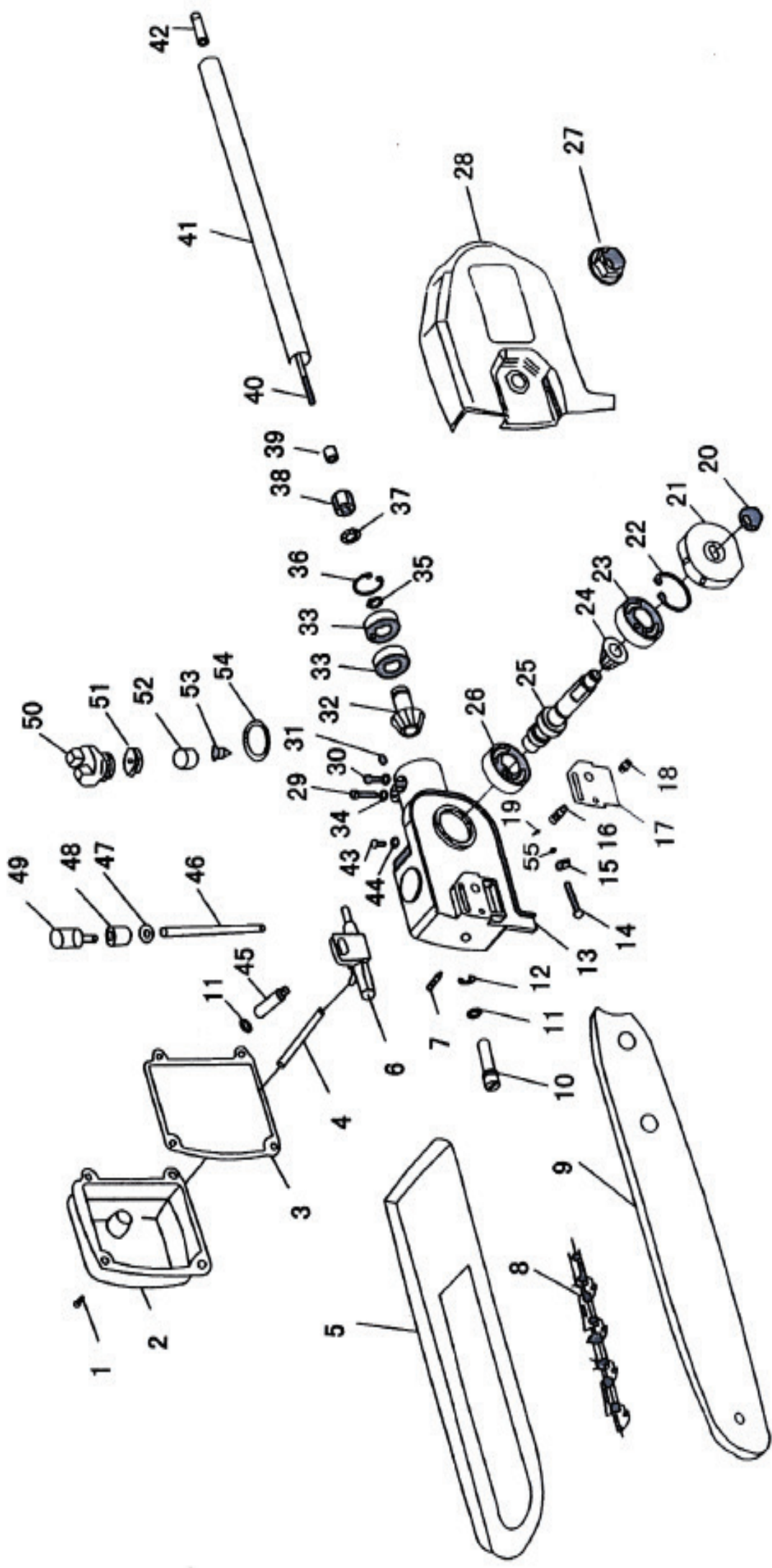
Item No.	Part No.	Description
1	GP03030060007	Nut M5
2	GP02020160100	Frame
3	GP03010110043	Butter Nib
4	GP03030060010	Nut M6
5	GP02020160099	Clip
6	GP02020070039	Blader Backstop
7	GP03010110089	Screw M5*18
8	GP02020070038	Blade Assy
9	GP02090030002	Felt
10	GP03040050055	Washer 6
11	GP03010110009	Bolt
12	GP03040020011	Washer 4
13	GP03050010016	Washer 4
14	GP03010010026	Screw M4*12
15	GP70070080058	Gear Case Cover
16	GP02070010054	Gear Case Washer
17	GP03090010005	Ball-Bearing 608-2Rs
18	GP02020090042	Eccenter
19	GP70070010013	Gear Case
20	GP03090010015	Ball-Bearing 6000-2RS
21	GP03120020002	Retaining Ring 26
22	GP02020090016	Gear
23	GP03120030005	Retaining Ring 6
24	GP02110020009	Round Cover
25	GP03020010002	Screw Assy M4*10
26	GP03030010003	Nut M6
27	GP03050010012	Washer

Item No.	Part No.	Description
28	GP03040050050	Washer
29	GP03120020007	Retaining Ring 22
30	GP02020090014	Gear Shaft Assy
31	GP03110020004	Sealing Washer
32	GP02020160047	Gear Case Cover
33	GP02070010103	Washer
34	GP03010010037	Screw M6*14
35	GP02020060021	Shaft
36	GP02020160294	Joint B
37	GP70010050021	Handgrip
38	GP02020160304	Screw Assy
39	GP02020070040	Course
40	GP02020150010	Washer
41	GP02080020082	Rubber Pipe
42	GP02040010005	Oil-Bearing
43	GP03010010010	Screw M5*25
44	GP03050010014	Washer
45	GP03040020019	Washer
46	GP03010010008	Screw M5*10
47	GP70070010012	Gear Case
48	GP03040050061	Washer 5
49	GP02020090067	Gear
50	GP03090010010	Ball-Bearing 6900-2Z
51	GP2020090138	Shaft
52	GP02010010110	Shaft Pipe



Item No.	Part No.	Description
1	GP02010010019	Pipe(24*1.5*750)
2	GP02020150010	Washer
3	GP02040010005	Oil-Bearing
4	GP02080020082	Rubber Cover
5	GP02020060020	Drive Shaft (785Mm)
6	GP70030180133	Harness Clamp
7	GP70030160007	Clamp
8	GP03040030002	Washer 5
9	GP03010060053	Screw M5x20
10	GP70030180089	Bolt
11	GP70070090011	Pipe Jion
12	GP03020030017	Screw(M5x12)
13	GP03040020015	Washer 6
14	GP03050010012	Washer6
15	GP03010010024	Bolt(M6x35)
16	GP03060030005	Pin
17	GP02050060016	Harness Ass'y
18	GP61270090004	Handle Ass'y
19	GP03010010048	Screw M5x35
20	GP70030160079	Handle Ass'y
21	GP70030160031	Handle Cover
22	GP61270040018	Level Ass'y
23	GP03010010029	Screw M5x14
24	GP02020160213	Clamp

Item No.	Part No.	Description
25	GP03030060008	Nut M5
26	GP70030070164	Box,Right
27	GP02080020053	Rubber Cover
28	GP70030180090	Clamp
29	GP03010010022	Screw M5x20
30	GP02050050078	Stop Switch
31	GP70030070047	Tine
32	GP02020110039	Spring
33	GP02020110041	Spring
34	GP70030070172	Safety Lever
35	GP02020110040	Spring
36	GP70030070074	Throttle Lever
37	GP02050040045	Cable Comp
38	GP03010010046	Screw M5x30
39	GP70030070216	Box,Left
40	GP03030010002	Nut M6
41	GP01040030002	Tube



Item No.	Part No.	Description
1	GP03020020032	Screw Assy (M4x12)
2	GP70030060064	Case Cover
3	GP02070010130	Washer
4	GP01040010011	Pipe
5	GP70030030338	Sawing Cover
6	GP02050130001	Oil Pump
7	GP02030010007	Pipe
8	GP02050110001	Chain
9	GP02050110003	Chain Bar
10	GP03010110030	Boit
11	GP03110020027	O-Ring
12	GP03120030005	E-Ring $\Phi 6$
13	GP70070010016	Gear Case($\Phi 24$)
14	GP03020020037	Screw(M5x40)
15	GP03030070040	Nut M5
16	GP03010050009	Bolt
17	GP02050110002	Washer
18	GP03010110107	Sarew (M6x8)
19	GP03060020010	Pin
20	GP03030060002	Nut M6
21	GP02050110010	Wheel
22	GP03120020003	Retaining Ring $\Phi 28$
23	GP02060040144	Ball-Bearing
24	GP02020090023	Gear
25	GP02020090049	Shaft
26	GP03090010039	Ball-Bearing
27	GP03030050009	Nut M8
28	GP70030030334	Gear Case Cover

Item No.	Part No.	Description
29	GP03010010010	Screw M5x25
30	GP03010010008	Screw M5x10
31	GP03040050060	Washer
32	GP02020090074	Gear
33	GP03090010011	Ball-Bearing 609Z
34	GP03050010014	Washer Φ 5
35	GP03120010008	Retaining Ring Φ 9
36	GP03120020006	Retaining Ring Φ 26
37	GP02020150010	Washer
38	GP02080020082	Rubber Cover
39	GP02040010005	Oil-Bearing
40	GP02020060021	Shaft
41	GP02010010115	Pipe
42	GP02020160294	Joint B
43	GP03010060048	Screw m6x10
44	GP03040020015	Washer Φ 6
45	GP03010110029	Boit
46	GP01040010011	Pipe
47	GP03040010009	Washer
48	GP02050120014	Sieve
49	GP02050120013	Sieve
50	GP70030060050	Oil-Cover
51	GP70030060051	Oil-Cover
52	GP02090010033	Sleve
53	GP02080040001	Valve
54	GP03110010001	O-Ring
55	GP03040020019	Washer