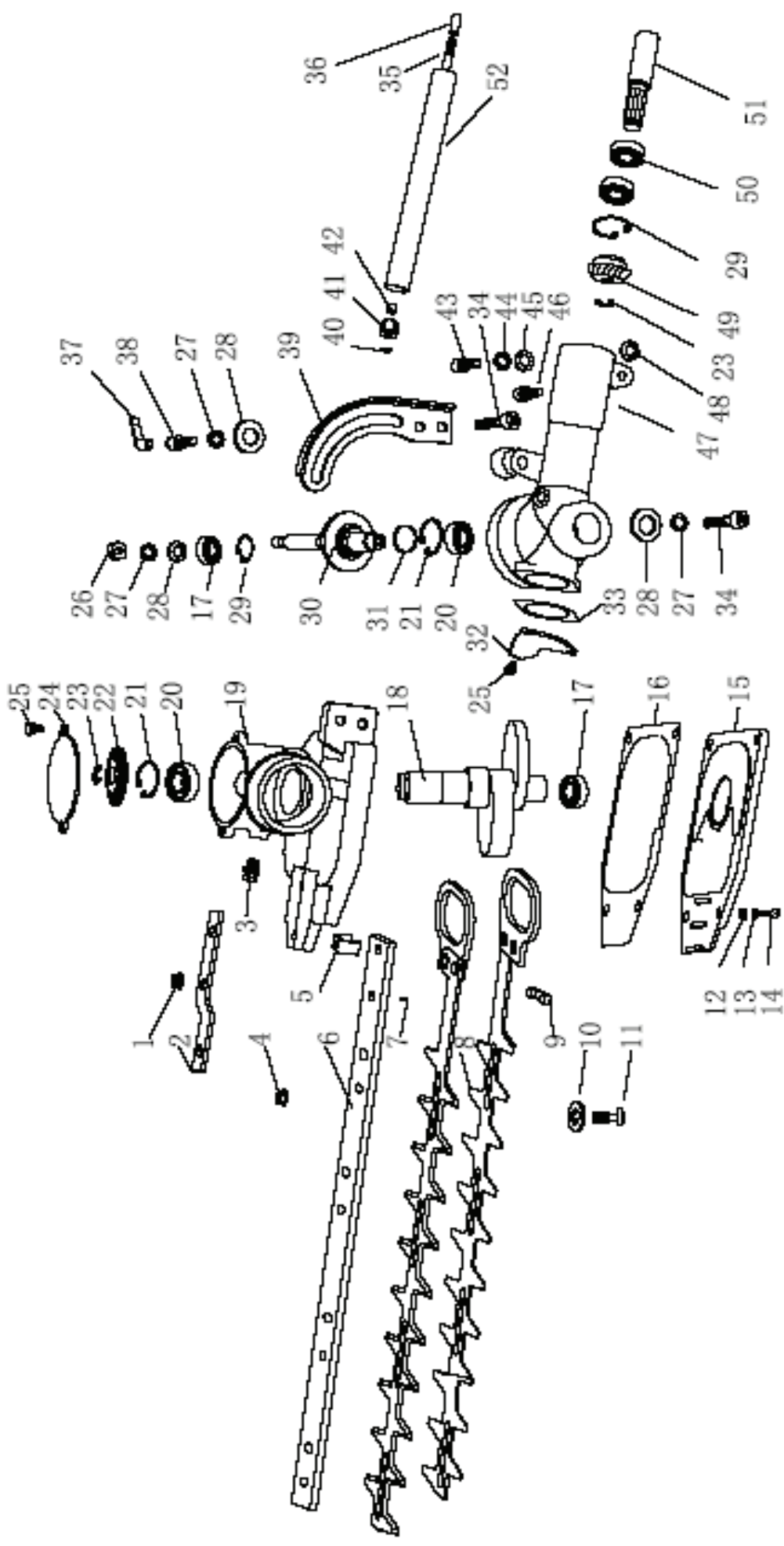




**Machinery | Spares | Consumables**  
(Specialist suppliers to Tool Hire & Garden Machinery Dealers)

# GP263N1HA Parts List





Item No.	Part No.	Description
1	GP03030060007	Nut M5
2	GP02020160100	Frame
3	GP03010110043	Butter Nib
4	GP03030060010	Nut M6
5	GP02020160099	Clip
6	GP02020070039	Blader Backstop
7	GP03010110089	Screw M5*18
8	GP02020070038	Blade Assy
9	GP02090030002	Felt
10	GP03040050055	Washer 6
11	GP03010110009	Bolt
12	GP03040020011	Washer 4
13	GP03050010016	Washer 4
14	GP03010010026	Screw M4*12
15	GP70070080058	Gear Case Cover
16	GP02070010054	Gear Case Washer
17	GP03090010005	Ball-Bearing 608-2Rs
18	GP02020090042	Eccenter
19	GP70070010013	Gear Case
20	GP03090010015	Ball-Bearing 6000-2Rs
21	GP03120020002	Retaining Ring 26
22	GP02020090016	Gear
23	GP03120030005	Retaining Ring 6
24	GP02110020009	Round Cover
25	GP03020010002	Screw Assy M4*10
26	GP03030010003	Nut M6
27	GP03050010012	Washer

<b>Item No.</b>	<b>Part No.</b>	<b>Description</b>
28	GP03040050050	Washer
29	GP03120020007	Retaining Ring 22
30	GP02020090014	Gear Shaft Assy
31	GP03110020004	Sealing Washer
32	GP02020160047	Gear Case Cover
33	GP02070010103	Washer
34	GP03010010037	Screw M6*14
35	GP02020060021	Shaft
36	GP02020160294	Joint B
37	GP70010050021	Handgrip
38	GP02020160304	Screw Assy
39	GP02020070040	Course
40	GP02020150010	Washer
41	GP02080020082	Rubber Pipe
42	GP02040010005	Oil-Bearing
43	GP03010010010	Screw M5*25
44	GP03050010014	Washer
45	GP03040020019	Washer
46	GP03010010008	Screw M5*10
47	GP70070010012	Gear Case
48	GP03040050061	Washer 5
49	GP02020090067	Gear
50	GP03090010010	Ball-Bearing 6900-2Z
51	GP02020090138	Shaft
52	GP02010010110	Shaft Pipe