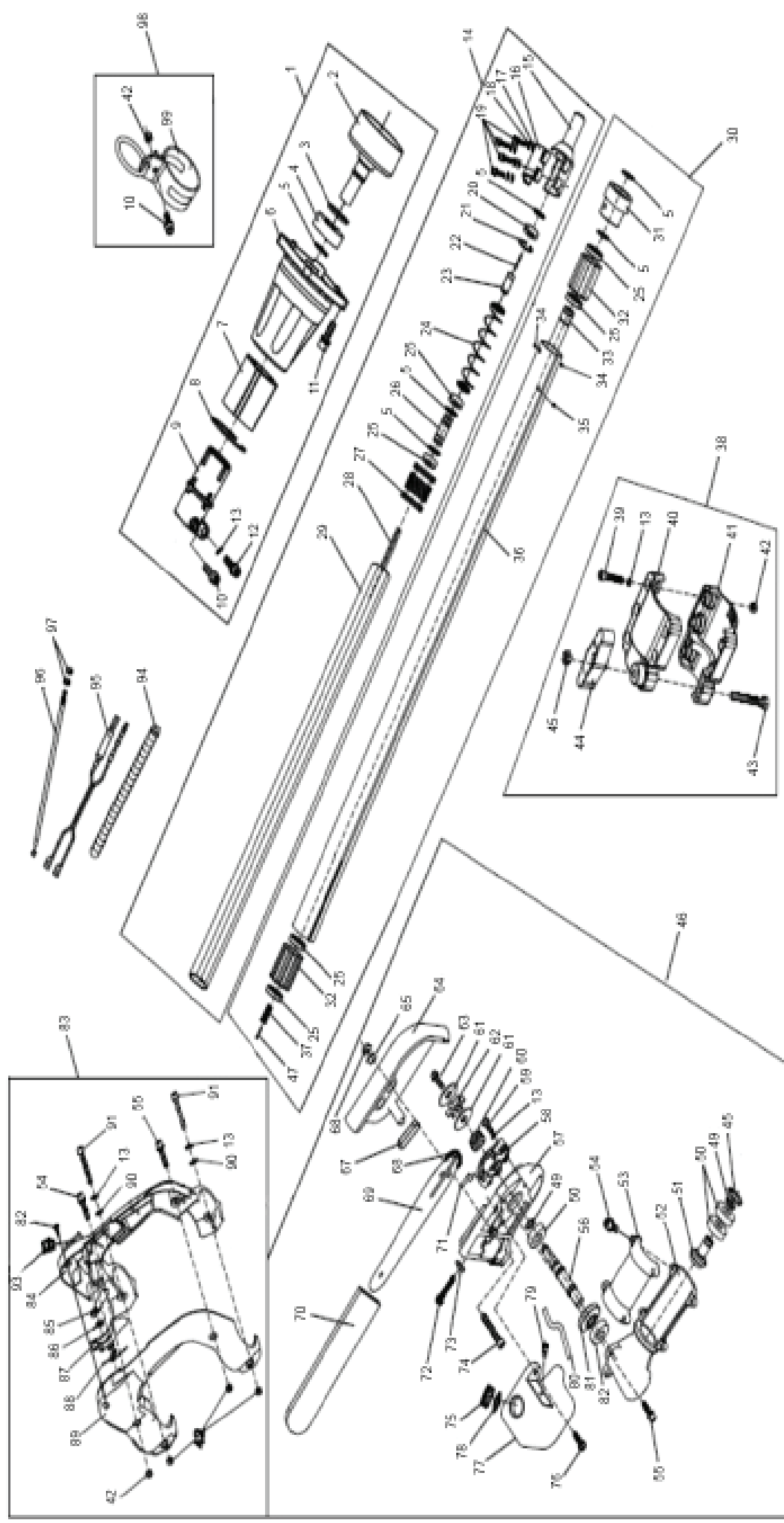




Machinery | Spares | Consumables
(Specialist suppliers to Tool Hire & Garden Machinery Dealers)

GP26LRPP Parts List



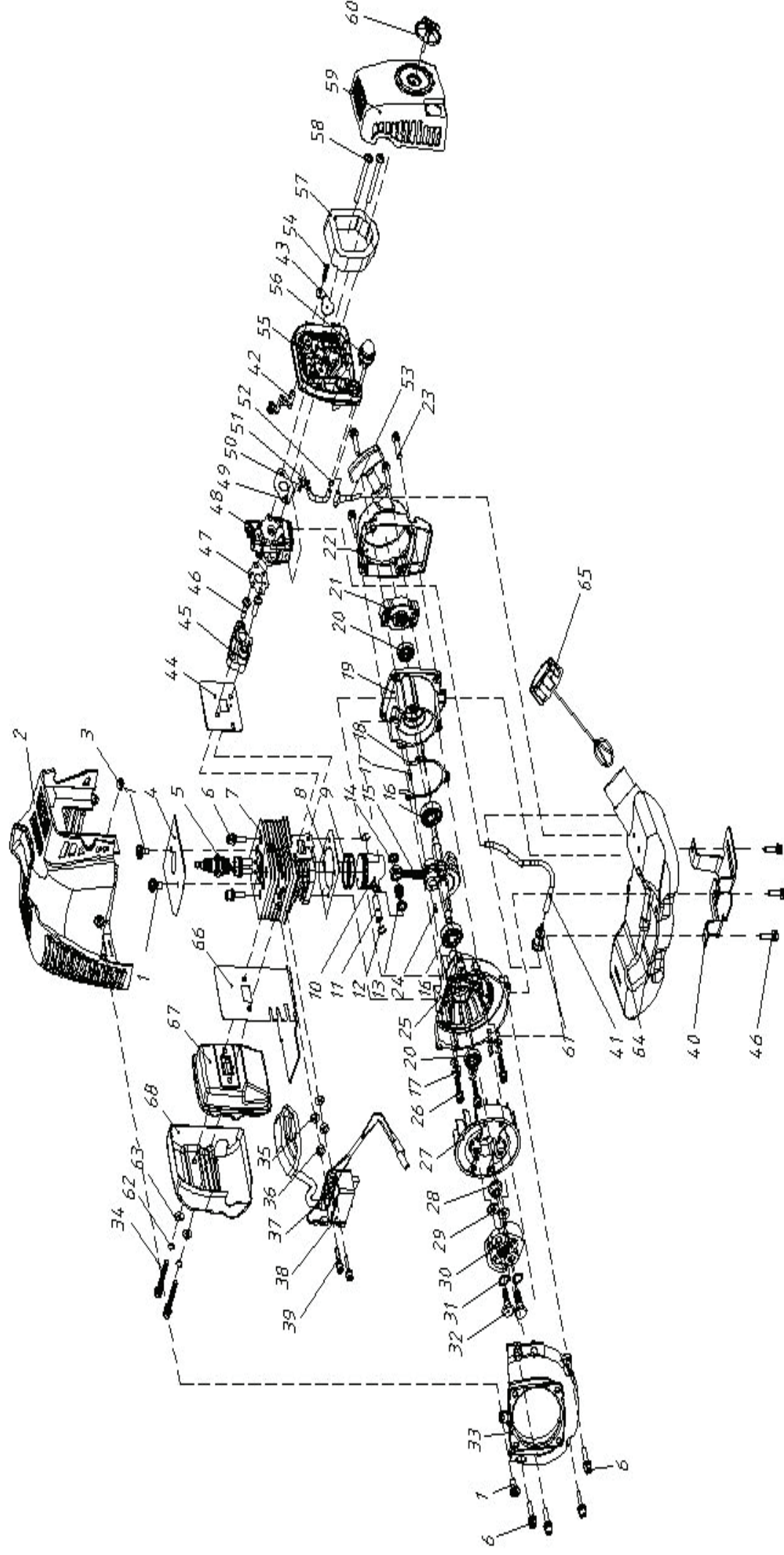


Item No.	Part No.	Description
1	GP61270020107	Clutch Case Assy
2	GP02020050036	Clutch Drum
3	GP03120020004	Retainer Ring
4	GP03090010012	Bearing
5	GP03120010005	Retainer Ring
6	GP80010060017	Clutch Case
7	GP02080020106	Antivibration Rubber
8	GP03120020010	Retainer Ring
9	GP80010060016	Pipe Joint
10	GP03020020025	Screw
11	GP03010010059	Screw
12	GP03010010021	Screw
13	GP03050010014	S.Washer
14	GP61270010147	Pipe Assy
15	GP80010060020	Pipe Connector
16	GP80010060021	Joint Cap
17	GP03040020015	Nut
18	GP03050010012	Nut
19	GP03010010018	Screw
20	GP03090010014	Bearing
21	GP03120020001	Retainer Ring
22	GP02050080037	Short soft shaft
23	GP02020090119	Spline tube
24	GP02020110117	Spring
25	GP03090010044	Bearing
26	GP02010010178	Connecting Shaft

Item No.	Part No.	Description
27	GP02080020109	Bushing
28	GP02010010147	Drive Shaft
29	GP02010010145	Pipe
30	GP61270010151	Connecting Tube Assy
31	GP70030180404	Bearing Bush
32	GP02080020105	Rubber Plug
33	GP02020160538	Connecting Shaft
34	GP04100000929	Rivet
35	GP04100000938	Rivet
36	GP02010010146	Connecting Tube
37	GP70070110038	Spline joint
38	GP61270120009	Holder Assy
39	GP03010010065	Screw
40	GP70030180405	Top Holder
41	GP70030180406	Lower Holder
42	GP03030060007	Lock Nut
43	GP03010020025	Screw
44	GP70030180407	Clamping Screw
45	GP03030060002	Lock Nut
46	GP61270030069	Saw Chain Assy
47	GP02020160606	Side key
48	GP03120020003	Retainer Ring
49	GP03120010002	Retainer Ring
50	GP03090010020	Bearing
51	GP02020090120	Pinion
52	GP80010040040	Gear Case

Item No.	Part No.	Description
53	GP80010060022	Cover for Gear Case
54	GP03010010057	Screw
55	GP03010010061	Screw
56	GP02020090109	Gear Shaft
57	GP80010040039	Plate for Gear Case
58	GP02050130005	Oil Pump
59	GP03010060055	Screw
60	GP02020090108	Turbine
61	GP02050110021	Washer for Sprocket
62	GP02050110020	Sprocket
63	GP03010030009	Screw
64	GP70030030460	Gear Case Board
65	GP02030030014	Insert
66	GP03030050002	Lock Nut
67	GP02080030033	Gasket
68	GP02050110026	Saw Chain
69	GP02050110027	Guide Bar
70	GP02110030192	Guide Bar Cover
71	GP02080030031	Rubber Plug
72	GP03010060050	Adjusting Screw
73	GP03030070063	Adjusting Nut
74	GP03010010034	Screw
75	GP70030060132	Oil Tank Cap
76	GP02070020057	Gasket for oil tank cap
77	GP70050030103	Oil Tank
78	GP03020020052	Screw

Item No.	Part No.	Description
79	GP02080040010	Check Valve
80	GP01040010010	Oil Tube
81	GP02020090110	Gear
82	GP03090010028	Bearing
83	GP61270040057	Control Box Assy
84	GP70030070334	Right Control Box
85	GP70030070335	Lock Lever
86	GP02020110108	Lock Spring
87	GP70030070336	Control Lever
88	GP02020110109	Spring
89	GP70030070333	Left Control Box
90	GP03040020019	Washer
91	GP03010010030	Screw
92	GP03010040038	Tapping Screw
93	GP02050050348	Stop Button
94	GP61350020009	Wave Pipe
95	GP02050050246	Stop Line
96	GP02050040152	Throttle Cable
97	GP03030010004	Nut
98	GP020630050015	Loop Assy
99	GP02020040054	Lifting Loop



Item No.	Part No.	Description
1	GP03020020053	Bolt assy M5X12
2	GP70030030556	Housing
3	GP02080020012	Fix sleeve,stop line
4	GP02020160187	Baffle of cylinder top
5	GP03130010013	Spark plug RCJ6Y
6	GP03010010062	Bolt M5X20
7	GP70070130001	Cylinder
8	GP02070010020	Gasket,cylinder
9	GP02020020003	Ring,piston
10	GP02010020006	Piston
11	GP02020010004	Pin,piston 8X28
12	GP02020030017	Ring, snap
13	GP03090020018	Needle bearing
14	GP02020150007	Washer,thrust
15	GP02020120009	Crank shaft assy
16	GP3090010028	Bearing 6001/P53
17	GP03060010002	PIN B3X10
18	GP02070010110	Gasket,crankcase
19	GP70020030002	Rear crankcase
20	GP03100010009	Oil seal 12X22X7
21	GP02050100005	Starter pulley comp
22	GP02050070002	Starter comp
23	GP03020020027	Bolt assy M5X16
24	GP03070010001	Woodruff key
25	GP70020030001	Front crankcase

Item No.	Part No.	Description
26	GP03010010046	Bolt M5X30
27	GP02050030018	Rotor
28	GP03030020003	Nut M8X1
29	GP03040050052	Washer
30	GP02050160002	Clutch assy
31	GP03040050042	Wave washer
32	GP02020130001	Clutch bolt
33	GP70070030024	Flywheel cover
34	GP03010010049	Bolt M5X50
35	GP03040010008	Washer 4
36	GP02070010048	Space,ig coil
37	GP02050050137	Wire, lead
38	GP02050030126	Ignition coil comp
39	GP03020020054	Bolt assy M4X20
40	GP02020160443	Bracket,fuel tank
41		Pipe
42	GP70030040030	Choke Handle
43	GP70030040028	Choke
44	GP02070010078	Gasket,insulator
45	GP02110030031	Insulator
46	GP03020020012	Bolt assy M5X20
47	GP02070010061	Gasket,carburetor
48	GP02050020050	Carburetor comp
49	GP02070010099	Gasket,carburetor

Item No.	Part No.	Description
50		Pipe
51	GP02020040036	Clip , pipe
52		Clip , pipe
53		Pipe
54	GP03010040022	Bolt ST3 12
55	GP70030040057	Base, cleaner
56	GP02050020127	Primer pump assy
57	GP02090010030	Air filter element
58	GP03020020031	Bolt assy M5X60
59	GP70030040131	Cover, cleaner
60	GP70030180372	Knob,cover
61	GP02050120002	Fuel filter comp
62	GP03050010014	Washer 5
63	GP03040020019	Washer 5
64	GP70050030096	Fule tank
65	GP02110020026	Cap,fule tank
66	GP02070010186	Gasket,muffler
67	GP02050010063	Muffler assy
68	GP02050010001	Heat shield