

5FT 44W LED HEAD WIRED C/W BATTERY BACKUP

INSTRUCTIONS FOR USE

IMPORTANT: PLEASE READ THESE INSTRUCTIONS CAREFULLY. NOTE THE SAFE OPERATIONAL REQUIREMENTS, WARNINGS AND CAUTIONS. USE THE PRODUCT CORRECTLY AND WITH CARE FOR THE PURPOSE FOR WHICH IT IS INTENDED. FAILURE TO DO SO MAY CAUSE DAMAGE AND/OR PERSONAL INJURY AND WILL INVALIDATE THE WARRANTY. PLEASE KEEP INSTRUCTIONS SAFE FOR FUTURE USE.



THE MAIN STRUCTURE PARAMETERS

Item No	LED5HWIREDBBU
Lamp Type	200 LED SMD2835
Power Supply	AC110-240V 50/60Hz
Safety Level	Class I
Rated Power	44W
Color Temperature	6400K
Lumen	4050lm
LED lifetime	30000hrs
IP Rating	IP54
Lamp Head size	L1565 x W89 x H92mm
Light angle	120°
Ambient	-25°C ~ +60°C
Cable	H05VV-F 3x1.5mm x 6M totally
Plug & Coupler	110V 16A EN60309
Maximum power outlet load	1500W
Coupler for linking a maximum	Maximum link 15 lights
Emergency	Full charge: 12Hrs Emergency power: 5Watt Emergency duration: 3hours Battery standard: 7.4V2.2AH Li-ion battery

This marking indicates that this product should not be disposed with other household wastes throughout the EU. To prevent possible harm to the environment or human health from uncontrolled waste disposal, recycle it responsibly to promote the sustainable reuse of material resources. To return your used device, please use the return and collection systems or contact the retailer where the product was purchased. They can take this product for environmental safe recycling.

PRECAUTIONS

- To ensure successful installation please read these instructions and review diagrams carefully before installation.
- Installation must be in accordance with local standards and legislation and must only be completed by a competent person.
- Before commencing installation please ensure the power supply has been isolated to avoid the risk of electric shock.
- The installer should check the lamp and body carefully for signs of damage before installation.
- Before installation check that the power supply is the same as stated on the data label of the product.
- Do not install the product in the rain or a wet area, the product is rated IP54 only when the diffuser is fitted.
- Do not exceed the rated power loading for each type of lamp.
- This product is of class 1 construction and must be earthed.

INSTALLATION

- Unpack the fitting and remove the diffuser and gear tray from the main body.
- Fix stainless steel mounting brackets as below: 1000mm CTRS for 1560mm long body(5ft).
- Install correctly rated flexible cable via the cable gland.
- Connect the live, (brown) neutral (blue) and earth (green & yellow) cables to the terminal block ensuring the securing screws are securely tightened.
- Tighten the strain relief nut of the cable gland to ensure the cable is secure.
- Fit the gear tray and diffuser to the main body of the fitting.
- Connect the power supply and check for correct operation of the fitting.

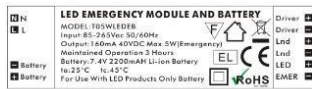
BATTERY REPLACEMENT

- Switch off the electricity at the mains.
- Open the fitting, unplug battery plugs(2 white pins).
- Remove the old battery pack with screwdriver.
- Replace new battery pack and connect the plugs.
- Close the fitting.
- Restore the power and perform operation check.
- Replacement of the battery or of the whole luminaire (if having non-replaceable lamp(s) and / or battery) is needed when they no longer meet their rated duration of operation after the corresponding recharge period.

SAFETY WARNING

- This unit must only be connected to an appropriate power supply.
- When not in use always disconnect from the power supply.
- Do not remove plug from mains supply by pulling on power cord.
- In some States, Territories or Work Sites, Operator training or equipment documentation may be required.
- Please check with your Local Regulatory Authority prior to use.
- The unit must only be connected to a reduced low voltage power supply.
- Please read installation instructions before connecting to mains supply. Ensure polarities are not reversed.
- Used batteries must be removed in accordance with local laws and regulations of the battery recycling by specialized departments, do not dispose of in the rubbish or dismantling their own in order to avoid environmental pollution and other accidents to happen!

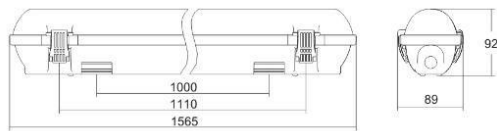
DIAGRAM FOR CONVERTER



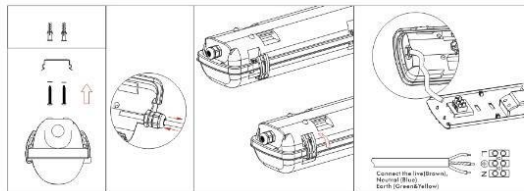
LAYOUT FOR LED FITTING WITH EMERGENCY PACK



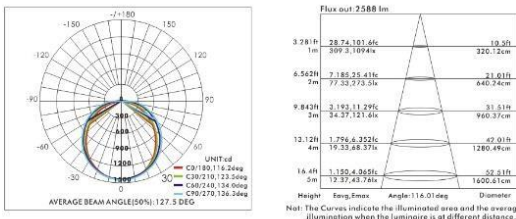
OVERALL DIMENSIONS



INSTALLATION



LUMINOUS INTENSITY DISTRIBUTION DIAGRAM(NORMAL MODE)



PLUG & COUPLER

Ensure the unit is correctly earthed via a three-pin 110V Plug & Coupler.

- Connect the green/yellow earth wire to the earth terminal 'E'.
- Connect the brown live wire to the live terminal 'L'.
- Connect the blue neutral wire to the neutral terminal 'N'.
- After wiring, check that there are no bare wires, that all wires have been correctly connected, that the cable outer insulation extends past the cable restraint and that the restraint is tight.

