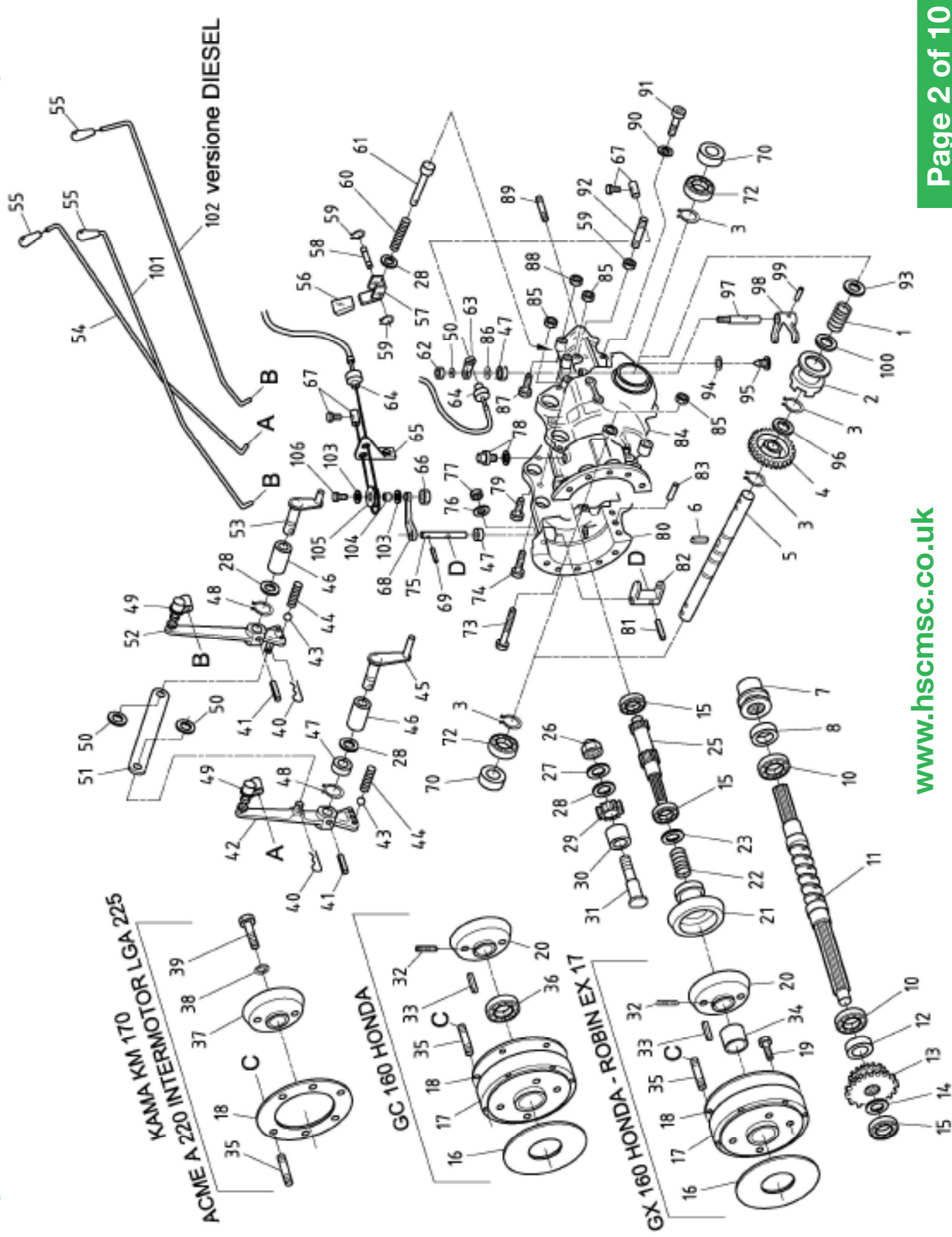




**Machinery | Spares | Consumables**  
(Specialist suppliers to Tool Hire & Garden Machinery Dealers)

# MC2300H Parts List

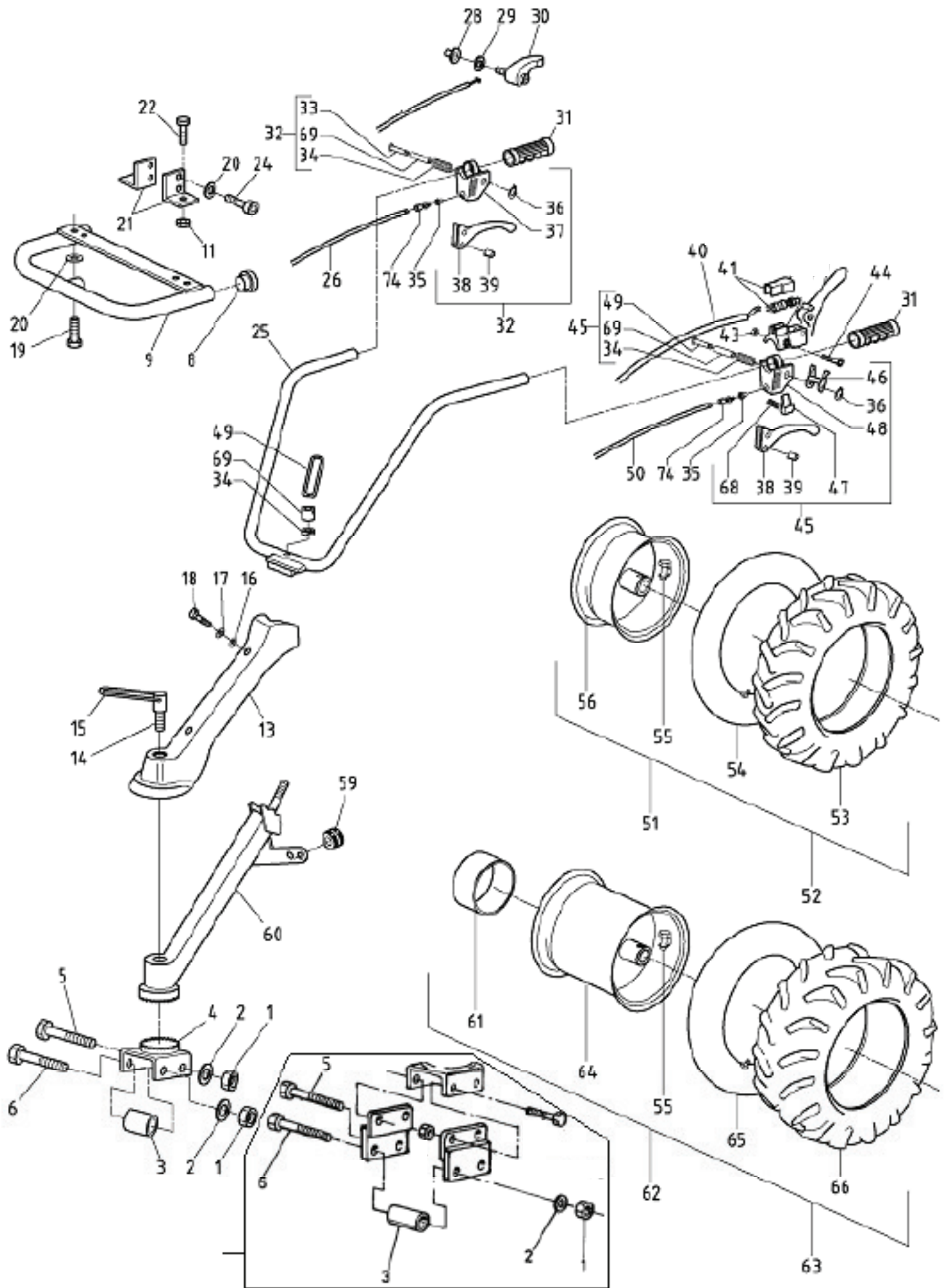




Item No.	Part No.	Description
1	02.287.0.001.0	Spring
2	02.217.0.066.0	Collar
3	02.007.0.010.0	Circlip E25 0510
4	02.287.0.004.0	Crown Gear
5	02.287.0.005.0	Wheel Shaft
6	02.275.0.072.0	Pin
7	02.287.0.007.0	Collar Gear Assembly
7	02.287.0.007.1	Collar (from ref: N.9807569)
8	02.287.1.008.0	Seal Ring 20x35x7 RP
10	02.097.0.042.0	Bearing (0326)
11	02.287.0.011.0	Shaft
12	02.287.0.012.0	Spacer
13	02.287.0.013.0	Gear Double
14	02.001.0.021.0	Spacer A-62 B-217
15	02.001.0.031.0	Bearing 6202 0302
16	02.287.0.016.0	Gasket
17	02.287.0.017.0	Flange For Honda Engine
18	02.287.0.018.0	Gasket
19	02.277.0.088.0	Bolt
20	02.287.0.020.0	Clutch Housing c/foro d.19
20	02.287.0.020.1	Clutch Housing c/foro d.20
21	02.287.0.021.0	Hub For Clutch
22	02.287.0.022.0	Spring For Clutch
23	02.008.0.069.0	Spacer I-715
25	02.287.0.025.0	Shaft
26	02.287.0.026.0	Nut
27	02.006.0.071.0	Washer b.D12 0233
28	02.001.0.036.0	Spacer 18-2628 (Shim)
29	02.287.0.029.0	Gear
30	02.092.0.093.0	Roll-Cage (0389) K 16x22x12
31	02.287.0.031.0	Bolt
32	02.207.0.069.0	Pin p.c. M6x8
33	02.277.0.089.0	Key
34	02.287.0.034.0	Bush d.19
34	02.287.0.034.1	Bush d.20

Item No.	Part No.	Description
35	02.231.0.099.0	Bolt M8x25 Uni 5911
36	02.007.0.022.0	Bearing 6204 0303
37	02.287.0.037.0	Clutch Housing
38	02.390.0.018.0	Washer (Special)
39	02.002.0.018.0	Bolt TE M8x25 0073
40	02.287.0.040.0	Cotter Pin
41	02.017.0.092.0	Spiral Pin 5x22 0601
42	02.287.0.042.0	Lever Gears
43	02.277.0.030.0	Ball 3/8
44	02.277.0.031.0	Spring for Gear Lever
45	02.287.0.045.0	Lever (Internal)
46	02.287.0.046.0	Bush
47	02.001.0.066.0	Seal Ring 12.19.5 0435
48	02.016.0.016.0	Circlip E12 0539
49	02.224.0.053.0	Coupling (Plastic)
50	02.001.0.007.0	Washer D8
51	02.287.0.051.0	Support
52	02.287.0.052.0	Lever
53	02.287.0.007.0	Collar Gear Assembly
53	02.287.0.053.1	Lever for PTO (8mm Pin Size)
54	02.287.0.054.0	Extension Lever
55	02.024.0.010.0	Knob B-265
56	02.287.0.056.0	Knob
57	02.287.0.057.0	Little Lever
58	02.287.0.058.0	Pin
59	02.076.0.114.0	Circlip "RS"4 (0517)
60	02.287.0.060.0	Spring
61	02.287.0.061.0	Pin
62	02.227.0.012.0	Nut
63	02.287.0.063.0	Lock Lever
64	02.287.0.064.0	Cable Terminal
65	02.287.2.065.0	Bracket
66	02.010.0.011.0	Self-Locking Nut M6 h.6
67	02.053.0.032.0	Cable B-255
68	02.287.2.068.0	Lever For Clutch
69	02.225.0.027.0	Spiral Pin 6x24
70	02.287.1.070.0	Seal Ring 25x42x7 RP
72	02.007.0.014.0	Bearing 6005 0322

Item No.	Part No.	Description
73	02.287.0.073.0	Bolt
74	02.222.0.014.0	Bolt TCE M6x40
75	02.287.0.075.0	Pin
76	02.001.0.005.0	Washer
77	02.001.0.008.0	Nut M8 H8 0263
78	02.287.0.078.0	Breather Plug
79	02.287.0.079.0	Bolt
80	02.287.0.080.0	Gearbox Casing (Matched Pair Left & Right)
81	02.225.0.027.0	Spiral Pin 6x24
82	02.277.0.054.0	Fork For Clutch
83	02.009.0.012.0	Roll Pin 8x12 0600
84	02.287.0.084.0	Gearbox Casing (Matched Pair Left & Right)
85	02.010.0.011.0	Self-Locking Nut M6 h.6
86	02.275.0.091.0	Shim
87	02.216.0.007.0	Bolt TCEI M8x35
88	02.002.0.009.0	Self-Locking Nut H8,5
89	02.287.0.089.0	Pin
90	02.001.0.023.0	Washer A-142
91	02.001.0.024.0	Bolt TC M6x10 0031
92	02.287.0.092.0	Bolt
93	02.007.0.015.0	Spacer B-227
94	02.287.0.094.0	Washer
95	02.020.0.019.0	Gearbox Drain Plug
96	02.008.0.022.0	Shim F-592
97	02.287.0.097.0	Pin
98	02.066.0.059.0	Selector Fork (172519)
99	02.017.0.092.0	Spiral Pin 5x22 0601
100	02.008.0.022.0	Shim F-592
101	02.287.0.101.0	Control Lever
102	02.287.0.102.0	Extension For Engaging Tiller MC2300D (Diesel)
103	02.006.0.049.0	Washer 6x18
104	02.276.2.101.0	Bushing
105	02.276.2.100.0	Pulley
106	02.014.0.078.0	Screw TE M6x25

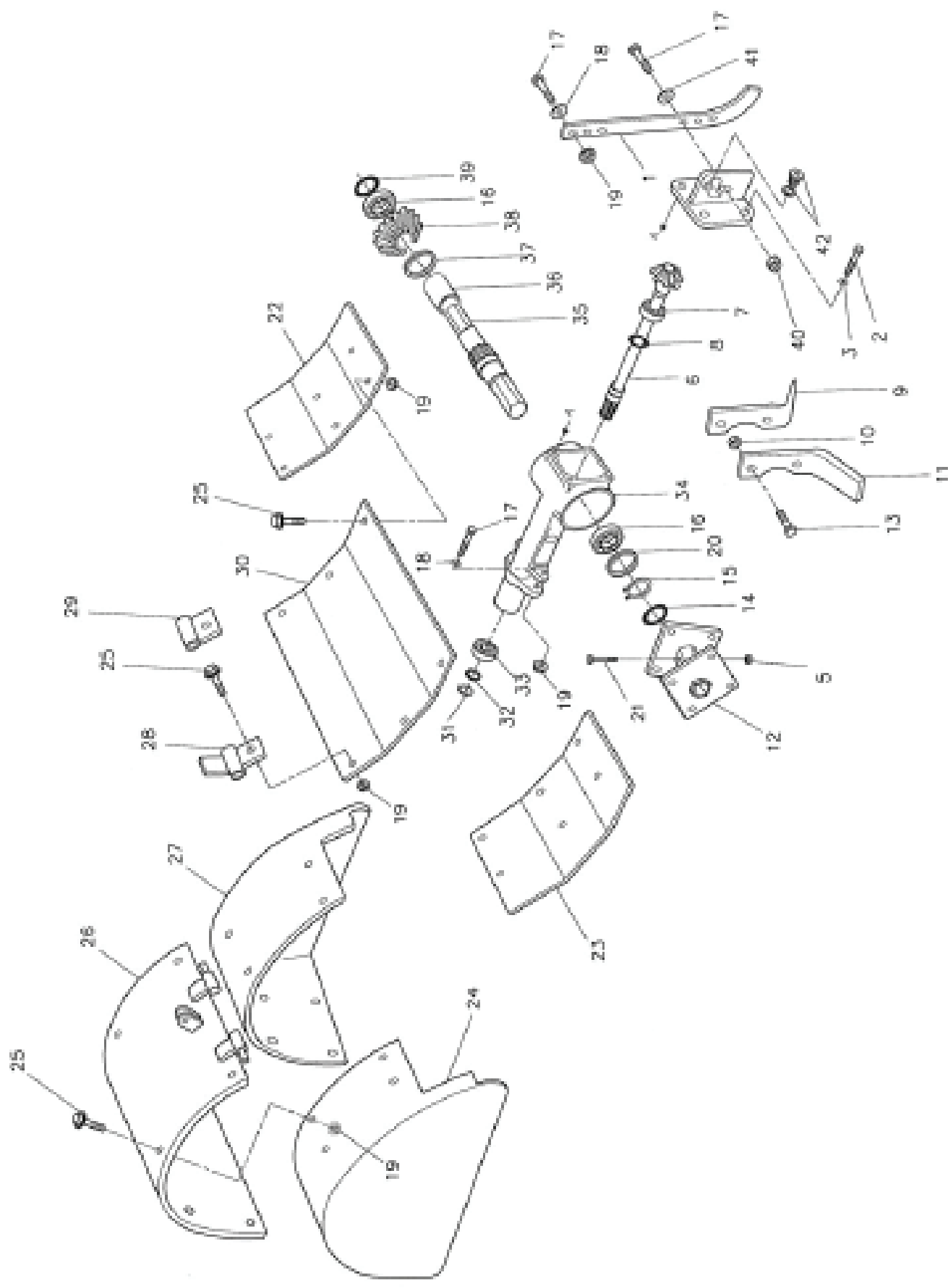


Item No.	Part No.	Description
1	02.011.0.052.0	Nut M10 h.10
2	02.011.0.034.0	Washer (Bevelled) d.10
3	02.066.0.033.0	Anti-Vibration Rubber (17-2580)
4	02.288.0.004.0	Support
5	02.011.0.089.0	Bolt TE M10x75 0129
6	02.200.0.006.0	Bolt TE M10x80
8	02.219.0.058.0	Cap
9	02.288.0.009.0	Guard
10	02.216.0.073.0	Screw TE 8x35
11	02.227.0.012.0	Nut
13	02.288.0.013.0	Guard
14	02.288.0.014.0	Pin
15	02.003.0.006.0	Spring 1159
16	02.002.0.005.0	Washer 10-1679
17	02.006.0.049.0	Washer 6x18
18	02.288.0.018.0	Bolt
19	02.001.0.038.0	Bolt TE M8x16 0070
20	02.003.0.016.0	Washer gr.D.8
21	02.288.0.021.0	Bracket ACME
22	02.001.0.016.0	Bolt TE 8x20
24	02.078.0.003.0	Bolt TCE M8x20
25	02.288.0.025.0	Handlebar MC2300
26	02.288.0.026.0	Clutch Cable (Transmission)
27	02.288.0.027.0	Throttle Cable A/H/ROBIN
28	02.003.0.012.0	Nut M6
29	02.001.0.072.0	Washer D6
30	02.224.0.029.0	Throttle Lever
31	02.288.0.031.0	Handle Bar Grip
32	02.288.0.032.0	Lever 105/FC200
33	02.288.0.033.0	Bolt
34	02.288.0.034.0	Spring
35	02.288.0.035.0	Cable Terminal
36	02.288.0.036.0	Circlip



Item No.	Part No.	Description
37	02.288.0.037.0	Lever Base Support
38	02.288.0.038.0	Clutch Lever
39	02.288.0.039.0	Hook
40	02.288.0.040.1	Stop Cable (Honda)
41	02.288.0.041.0	Micro Switch (Complete)
42	02.288.0.042.0	Stop Lever (Honda)
43	02.010.0.011.0	Self-Locking Nut M6 h.6
44	02.222.0.014.0	Screw TCE M 6x40
45	02.288.0.045.0	Lever MC2300/BL 105/FC 200
46	02.288.0.046.0	Side Plate
47	02.288.0.047.0	Button Lock
49	02.288.0.049.0	Pin
50	02.288.0.050.0	Clutch Cable (Rotor Drive)
50	02.288.1.050.0	Wire For Clutch
51	02.222.0.079.0	Left Hand Wheel 3506
52	02.222.0.078.0	Right Hand Wheel 3506
53	02.216.0.078.0	Tyre 3.50.6 (Tractor)
54	02.216.0.079.0	Tube 3.50.6
55	02.288.0.055.0	Pin
56	02.222.0.060.0	Rim
57	02.003.0.005.0	Nut (Special Z-1548)
58	02.003.0.004.0	Washer Z-1550
59	02.174.0.054.0	Rubber Ring For Cable
60	02.288.0.060.0	Support Handle bar
61	02.288.0.061.0	Tube
62	02.288.0.062.0	Left Hand Wheel 13.5.00-6
63	02.288.0.063.0	Right Hand Wheel 13.5.00-6
64	02.288.0.064.0	Rim 13.5.00-6
65	02.257.0.031.0	Tube
66	02.257.0.032.0	Tyre 13.500.6
67	02.288.0.067.0	Lever c/w Stop Cable MC2300c/GX160/A/K/I
68	02.288.0.068.0	Lock Lever Spring
69	02.288.0.069.0	Spacer
74	02.276.1.039.0	Cable Adjuster





Item No.	Part No.	Description
1	02.289.0.001.0	Depth Skid
2	02.001.0.016.0	Bolt TE 8x20
3	02.003.0.016.0	Washer gr.D.8
4	02.289.0.004.0	Cover
5	02.002.0.009.0	Self-Locking Nut H8,5
6	02.289.0.006.0	Pinion
7	02.007.0.022.0	Bearing 6204 0303
8	02.260.0.019.0	Oil Seal 20x40x7
9	02.289.0.009.0	Left Hand Blade
10	02.289.0.010.0	Nut M8
11	02.289.0.011.0	Right Hand Blade
12	02.289.0.012.0	Blade Support Hub
13	02.289.0.013.0	Bolt
14	02.097.0.058.0	Oil Seal 25x52x8 (0417)
15	02.008.0.027.0	Circlip I52 0532
16	02.001.0.009.0	Bearing 6205 0304
17	02.002.0.016.0	Bolt TE M8x30
18	02.001.0.007.0	Washer D8
19	02.227.0.012.0	Nut
20	02.006.0.040.0	Shim 17-2523
21	02.009.0.029.0	Bolt TE M8x40 0076
22	02.289.0.022.0	Right Hand Guard
23	02.289.0.023.0	Left Hand Guard
24	02.289.0.024.0	Rotor Guard
25	02.289.0.025.0	Bolt
26	02.289.0.026.0	Hood
27	02.289.0.027.0	Right Hand Side Rotor Guard
28	02.289.0.028.0	Left Hand Hinge
29	02.289.0.029.0	Right Hand Hinge
30	02.289.0.030.0	Centre Guard
31	02.001.0.054.0	Circlip For Drive Shaft E17 0506
32	02.001.0.021.0	Spacer A-62 B-217
33	02.259.0.005.0	Bearing 6003/2RS
34	02.289.0.034.0	Casing
35	02.289.0.035.0	Tiller Axle
36	02.289.0.036.0	Spacer
37	02.008.0.022.0	Shim F-592
38	02.289.0.038.0	Wheel
39	02.287.0.070.0	Oil Seal 25x47x7
40	02.002.0.009.0	Self-Locking Nut H8,5
41	02.026.0.007.0	Spacer 17A185
42	02.289.0.042.0	Cap