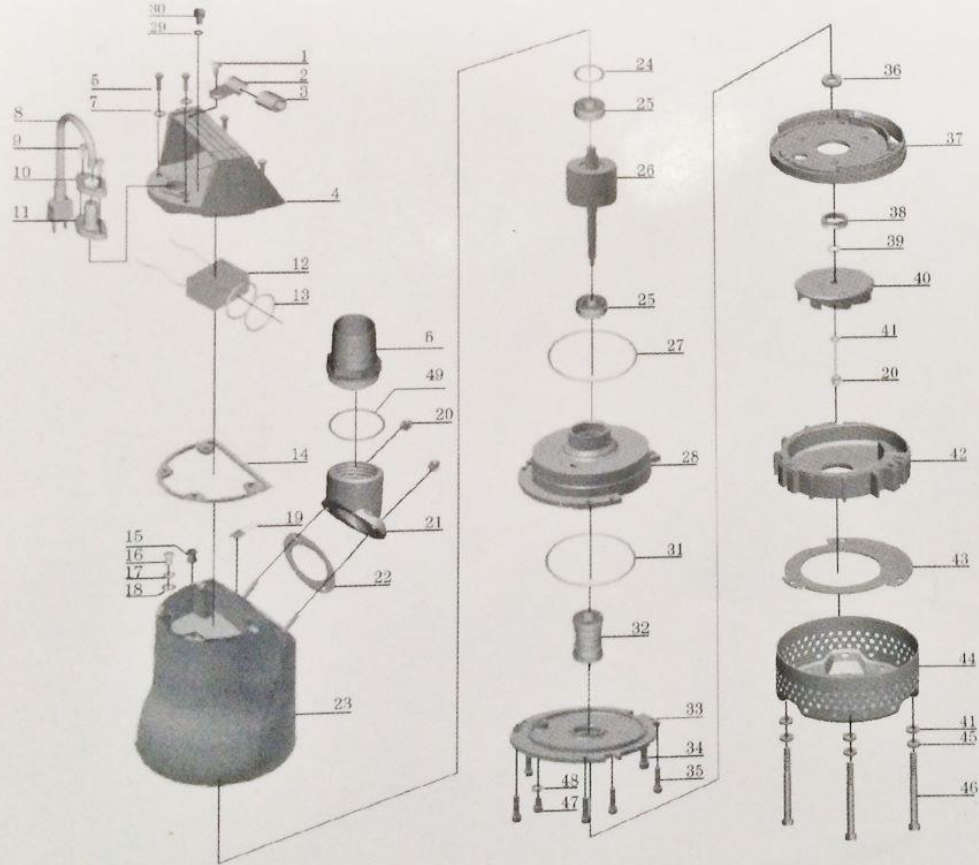


DIAGRAM:

SPK450A



| NO. | DESCRIPTION | MATERIAL | NO. | DESCRIPTION | MATERIAL |
|-----|-------------------|-----------------|-----|-------------------|---------------------------------|
| 1. | Screw | 11 | 26. | Rotor | Combined Pieces |
| 2. | Cable presser | 11 | 27. | "O" ring | NBR |
| 3. | protector | NR | 28. | Oil chamber | AISI12 |
| 4. | Handle | AISI12 | 29. | "O" ring | NBR |
| 5. | Screw | 11 | 30. | Screw | 11 |
| 6. | Out-let connector | ABS | 31. | Rubber washer | NBR |
| 7. | Washer | 11 | 32. | Mechanical seal | Alumuna/Graphite |
| 8. | Cable | Combined Pieces | 33. | Oil chamber cover | AISI12 |
| 9. | Screw | 11 | 34. | Screw | 11 |
| 10. | Flange | 11 | 35. | Screw | 11 |
| 11. | Cable protector | CR | 36. | Oil seal | Combined Pieces |
| 12. | Capacitor | Combined Pieces | 37. | Pump seat | NBR(including stainless insert) |
| 13. | "O" ring | NBR | 38. | Lip seal | NBR |
| 14. | Gasket | NBR | 39. | Washer | 11 |
| 15. | Line protector | NBR | 40. | Impeller | NBR(including stainless insert) |
| 16. | Screw | CuZn40 | 41. | Washer | 11 |
| 17. | Stretching washer | 1566 | 42. | Pump body | PP |
| 18. | Washer | 11 | 43. | Pump cover | 14 |
| 19. | Thermal protector | Combined Pieces | 44. | Filter mesh | Fe360A plastic powdering |
| 20. | Nut | 11 | 45. | Stretching washer | 11 |
| 21. | Out-let connector | AISI12 | 46. | Bolt | 11 |
| 22. | Rubber washer | NBR | 47. | Screw | 11 |
| 23. | Motor stator | AISI12 | 48. | "O"ring | NBR |
| 24. | Undulated washer | 1566 | 49. | "O"ring | NBR |
| 25. | Ball bearing | Combined Pieces | | | |