



# PARTS DRAWING

**MCE MASTER**  
CLIMATE SOLUTIONS

**Master 22kw  
3 Phase Fan Heater**

**Product Code:  
B22415V**



Serial Number Range:

From:

To:

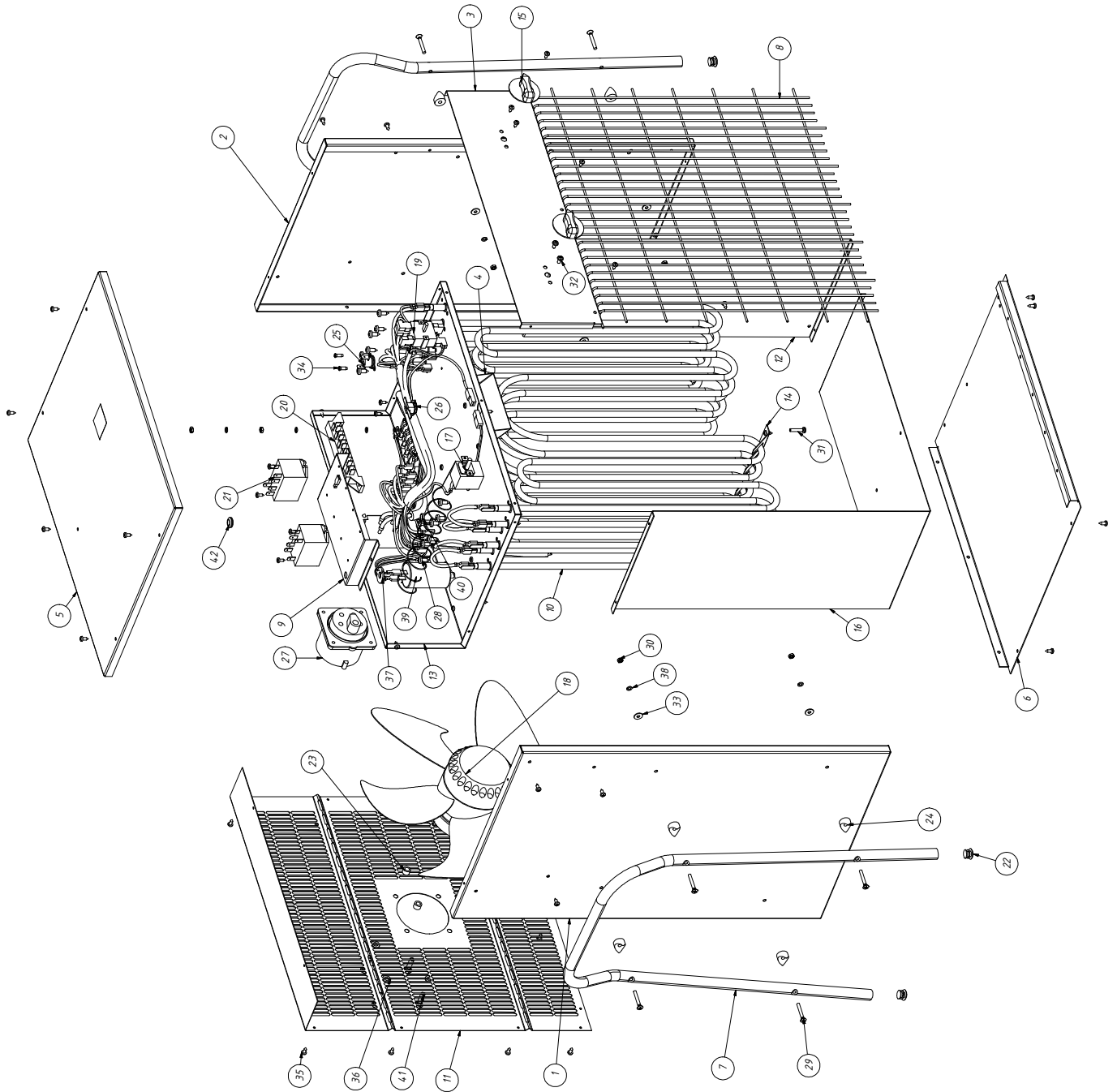
Year Of Manufacture: 2013

**\*Please note, when ordering online via our website if the part number is not recognised, please Email [spares@hscgroupuk.co.uk](mailto:spares@hscgroupuk.co.uk) or Telephone 0115 946 1988**

**KEEP THIS BOOKLET FOR FUTURE REFERENCE**

Nottingham: 0115 946 1988 • London: 0208 830 3333 ✉ Nottingham: [sales@hscgroupuk.co.uk](mailto:sales@hscgroupuk.co.uk) • London: [sean@hscgroupuk.co.uk](mailto:sean@hscgroupuk.co.uk) 🌐 [www.hscgroupuk.co.uk](http://www.hscgroupuk.co.uk)

The Hire Supply Company Terms & Conditions Apply At All Time E&OE



MASTER ELECTRIC HEATERS B 22 EPB 22kW

Pos.	Description	Code	Qty.
1	RIGHT PANEL	S/R	1
2	LEFT PANEL	S/R	1
3	NAME PLATE PANEL	S/R	1
4	BOUNDARY LAYER	S/R	1
5	TOP PANEL	S/R	1
6	DOWN PANEL	S/R	1
7	PIPE HANDLE	4510.170	2
8	GRILLE 22 EPB	4511.273	1
9	CONTACTOR FASTENING	S/R	1
10	HEATING ELEMENT 3666W	4510.375	6
11	BACK PANEL	S/R	1
12	HEAT SHIELD	S/R	1
13	SHELF	S/R	1
14	STABLE ELEMENT	4511.251	1
15	KNOB 44mm	4510.610	2
16	HEAT SHIELD TYPE "L"	S/R	1
17	CAPILLARY THERMOSTAT 16A/250V 0-40oC	4510.416	1
18	AXIAL FAN MOTOR 70W/230V	4510.322	1
19	ROTARY SWITCH 16A/400V	4510.401	1
20	SCREW TEWRMINAL BLOCK 6x40A/450V	4510.414	1
21	RELAY 25A/250V RELPOL	4510.451	2
22	PIPE CAP	4510.623	4
23	DISTANCE 6,2X10X7	4510.627	4
24	PLASTIC DISTANCE 15mm	4510.603	8
25	OVERHEAT SENSOR 16A/250V 60oC/NO	4510.404	1
26	OVERHEAT THERMOSTAT 16A/250V 80oC	4510.449	1
27	PLUG PANEL MOUNTED 32A/400V 3P+N+E (56)	4510.411	1
28	TAPPING SCREW ST4.8X13	4510.821	16
29	SCREW M4x30	4510.848	8
30	HEXAGON NUT M4	4510.808	11
31	SCREW M4X20	4510.804	1
32	SCREW M4X8	4510.814	2
33	PLAIN WASHER M4	4510.849	8
34	SHEET-METAL SCREW ST3,9X9,5	4510.841	2
35	CROSS RECESSED PAN HEAD TAPPING SCREW ST3,5X9,5	4510.847	56
36	SPRING LOCK WASHERS A6	4510.831	4
37	SPRING WASHER M8	4513.809	1
38	SPRING LOCK WASHERS A4	4510.810	11
39	HEXAGON NUT M8	4513.806	1
40	BELT 6/3 110	4510.608	10
41	METRIC BOLT M6x20	4514.805	4
42	SEAL WIRE 14.2x8x11x1,6x4.8mm	4511.621	1

S/R = Parts Available On Special Request Only



## Recycling



**ENVIRONMENTAL PROTECTION:** Please recycle any unwanted materials as opposed to disposing them as general waste. It is recommended the original is retained and used to store the product when not in use for prolonged periods of time. If this is not applicable ensure the materials are sorted and recycled in accordance with local regulations.



**SPECIFICATION CHANGE:** It is our policy to continually improve products to ensure these meet the rigours of the industry we serve. Therefore, as such we reserve the right to alter specifications, data, components & parts with-out prior notice.

**WARRANTY:** Please refer to the manufactures terms & conditions.

**IMPORTANT:** No liability will be accepted for the incorrect use of this product.

### KEEP THIS BOOKLET FOR FUTURE REFERENCE

📞 Nottingham: 0115 946 1988 • London: 0208 830 3333    ✉ Nottingham: [sales@hscgroupuk.co.uk](mailto:sales@hscgroupuk.co.uk) • London: [sean@hscgroupuk.co.uk](mailto:sean@hscgroupuk.co.uk)    🌐 [www.hscgroupuk.co.uk](http://www.hscgroupuk.co.uk)

The Hire Supply Company Terms & Conditions Apply At All Time E&OE